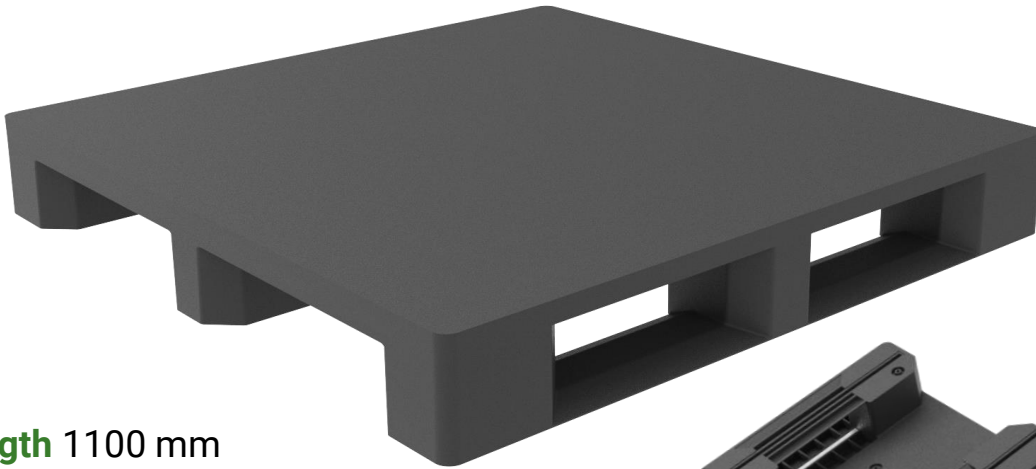


# HDX 1111 RL

Sealed Deck for Better Hygiene

**Re>Pal™**  
Uniquely Sustainable



**Length** 1100 mm

**Width** 1100 mm

**Height** 150 mm

**Weight** 27 kg

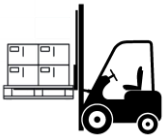
**Tolerance :**

Length & width  $\pm 10$ mm, Weight  $\pm 7\%$

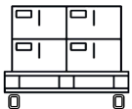
## Load Capacity



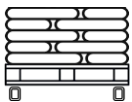
Stacking load  
**4000 kg**



Lifting load  
**1500 kg**



Racking Load (Carton)  
**1000 kg**



Racking Load (Sacks)  
**800 kg**

## Handling Accessibility



Forklift  
**4 Ways**



Hand Jack  
**4 Ways**



Pallet Mover  
**4 Ways**

### A sustainable logistics solution

- made from 100% recycled Indonesian plastics
- no fumigation requirements, or risk of nail or splinter damage
- significantly lower carbon footprint than timber pallets
- significantly lower carbon footprint than injection-molded plastic pallets

Contact us

+62 343 740 100

or email : [sales@repal.com](mailto:sales@repal.com)

[www.re-pal.com](http://www.re-pal.com)



RePal Pallets



@repalpallets



RePal Pallets